



StanCOG
Stanislaus Council of Governments

SR99 AT BRIGGSMORE AVENUE/
CARPENTER ROAD

Interchange Improvement Project

Public Meeting No. 1

February 18, 2025



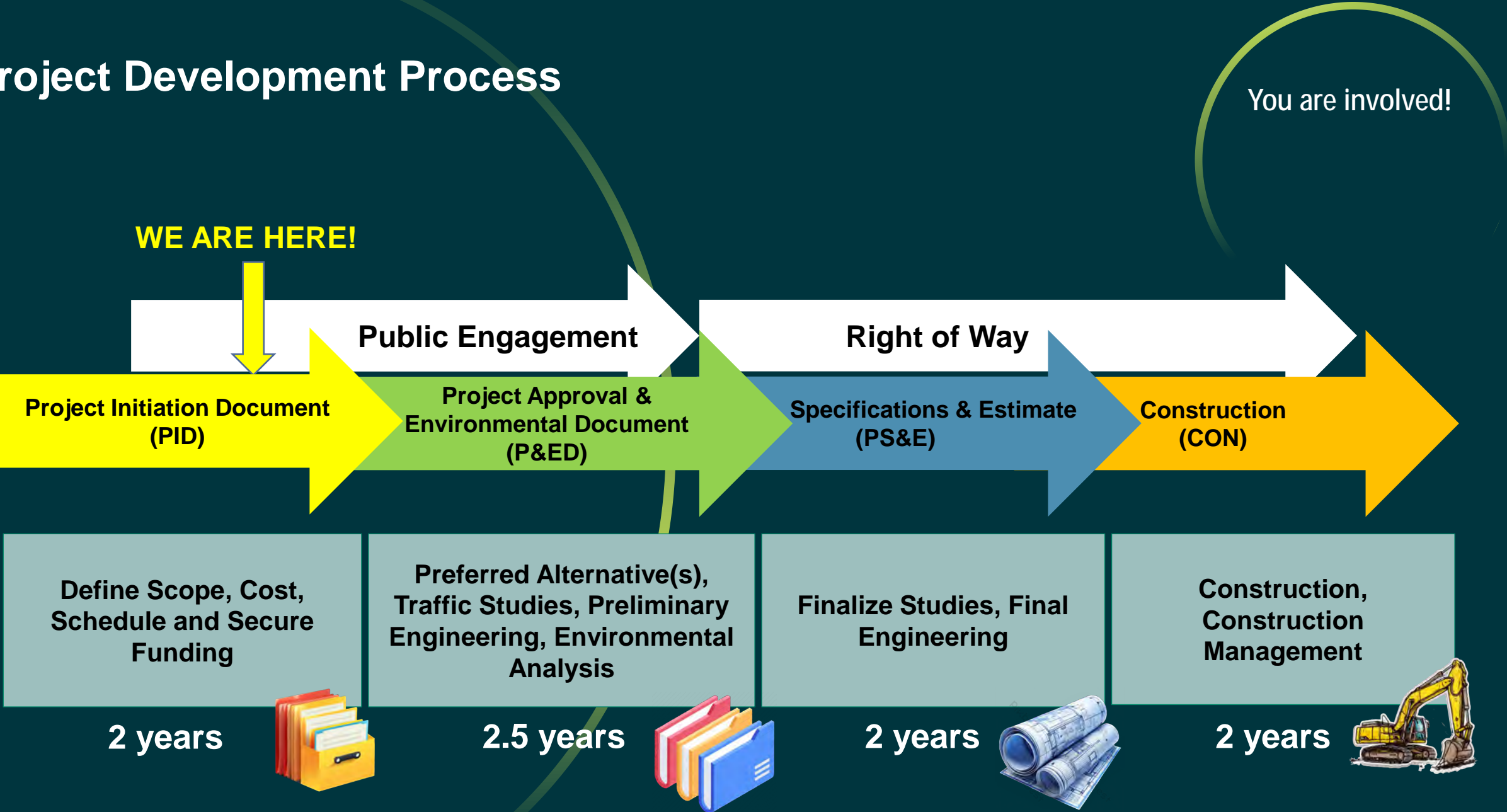
Purposeful Access | Climate Action

Agenda

1. Welcome
2. Project Development
3. Project Approach
4. Problem Definition
5. Interchange and Network Planning
 - Interchanges
 - Local Roads
6. Questions and Answers

Project Development

Project Development Process

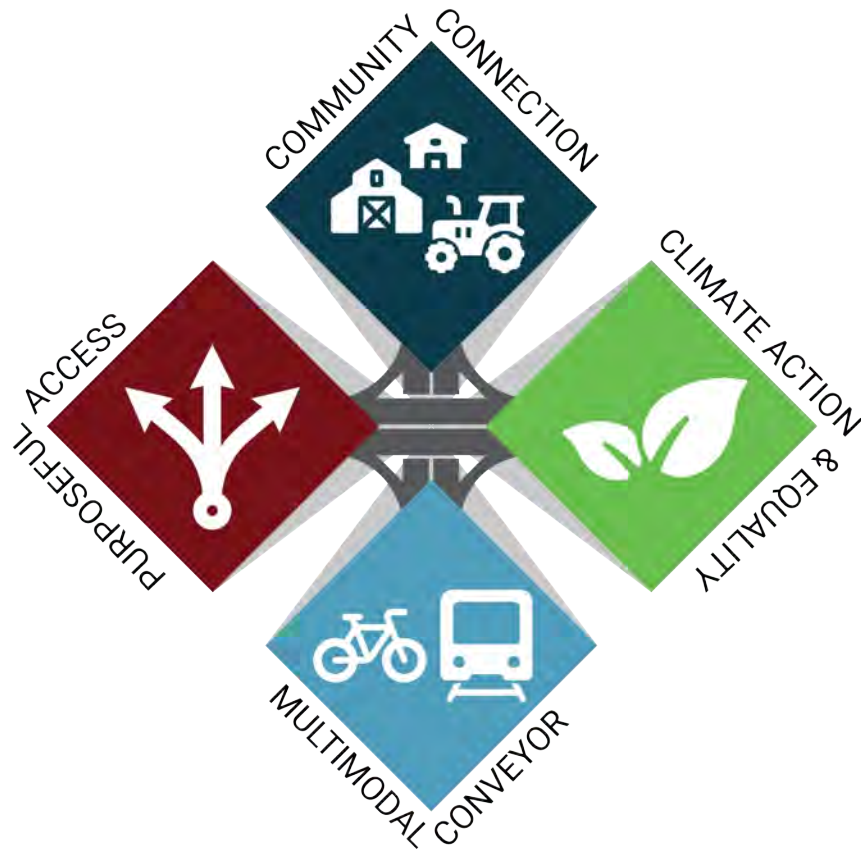


Project Approach

Overview of the CITY & AECOM Vision

Consistent with Caltrans System Investment Strategy (CSIS)

This is a
community
improving project!



The CITY & AECOM Vision

Goals & Objectives:



Purposeful Access: Develop a holistic, fundable project with facilities aligned with climate, health, and social fairness



Multimodal Conveyor: Develop a revised roadway, pedestrian, bikeway, and transit network that encourages mode shift, resulting in climate action



Community Connection: Develop a purposeful urban and rural community access through mutually beneficial facilities



Climate Action – Fairness: Develop a phased project providing community / stakeholder benefits and climate action supporting facilities

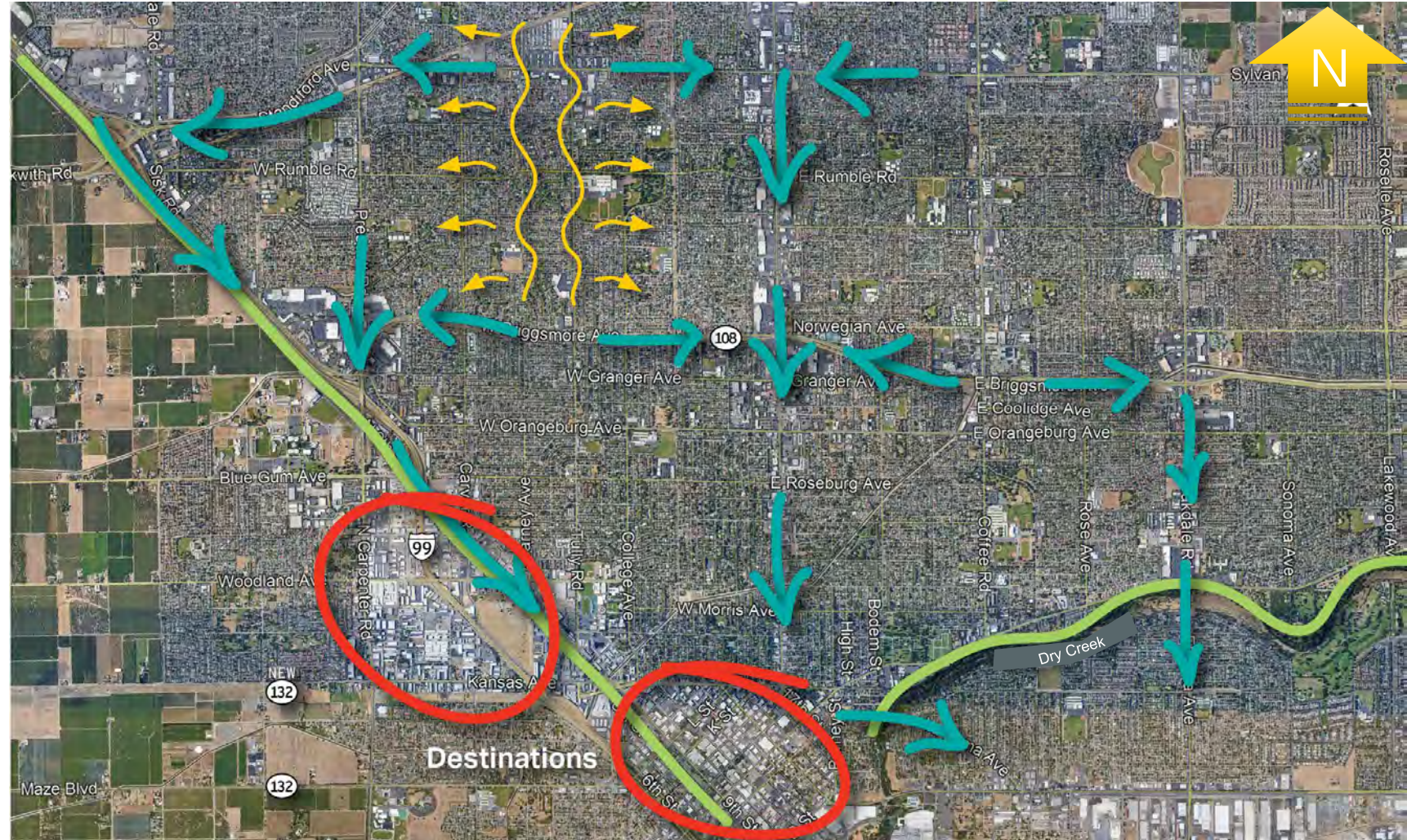
Problem Definition

System Context

Defining the system context!

The network sets the travel demands and patterns

- North / South arterials broken by SR-99, Railroad, Dry Creek
- SR-99 of statewide importance and is a priority
- SR-99 serving short trips

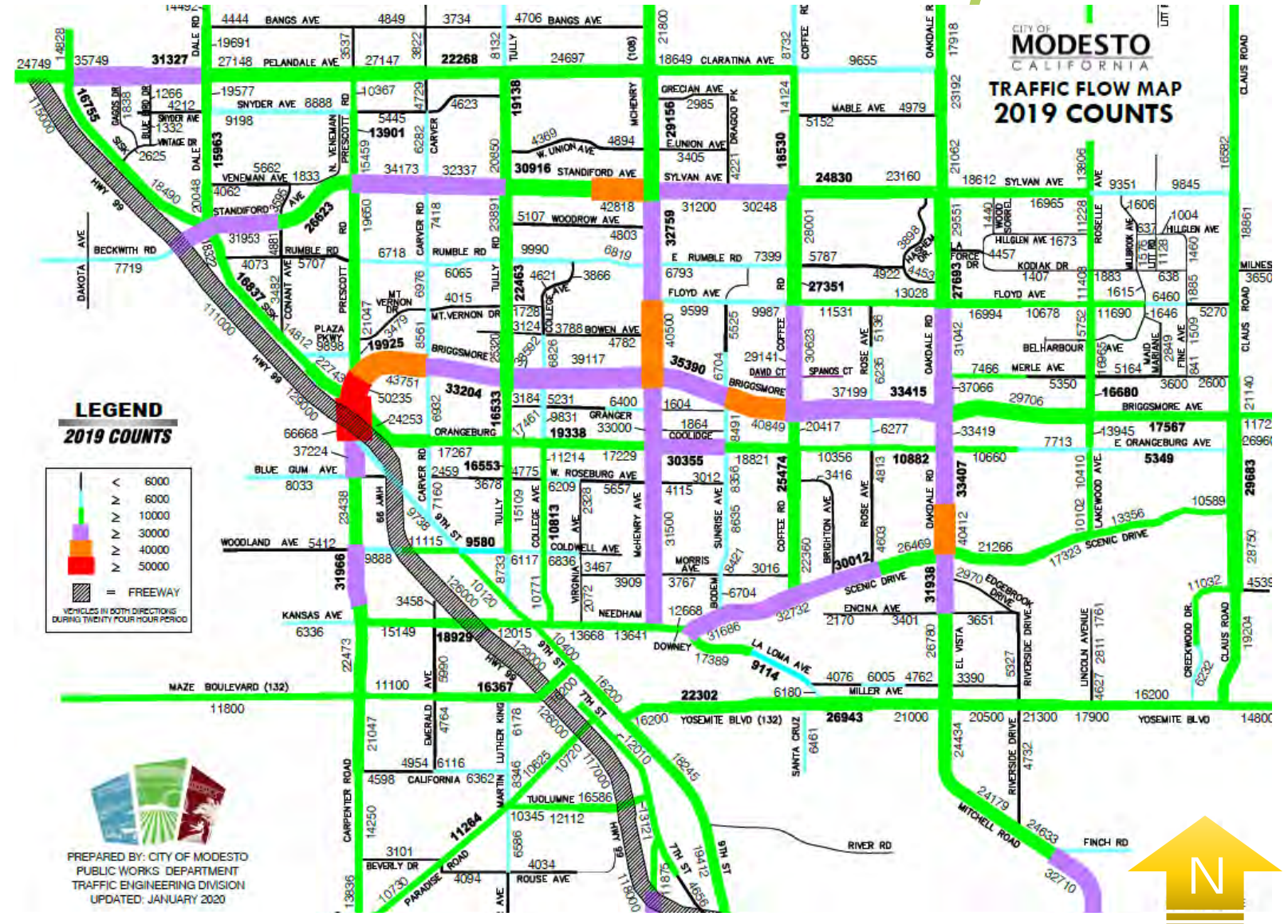


Traffic Demand

Defining the
system context!

Traffic Flow Map

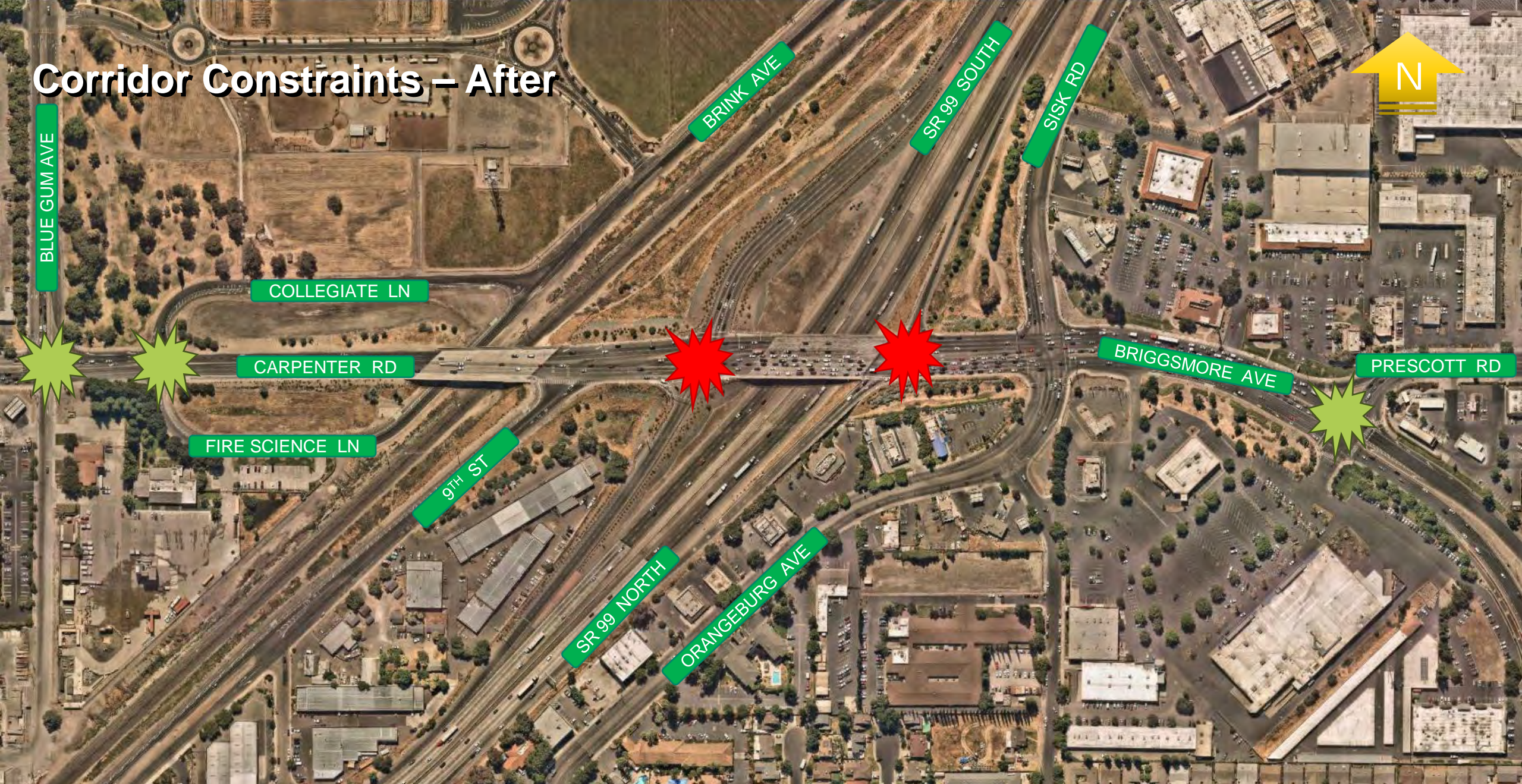
- Daily traffic volumes
- Briggsmore Interchange
 - Highest traffic volume demand
 - Bottleneck



Corridor Constraints – Before



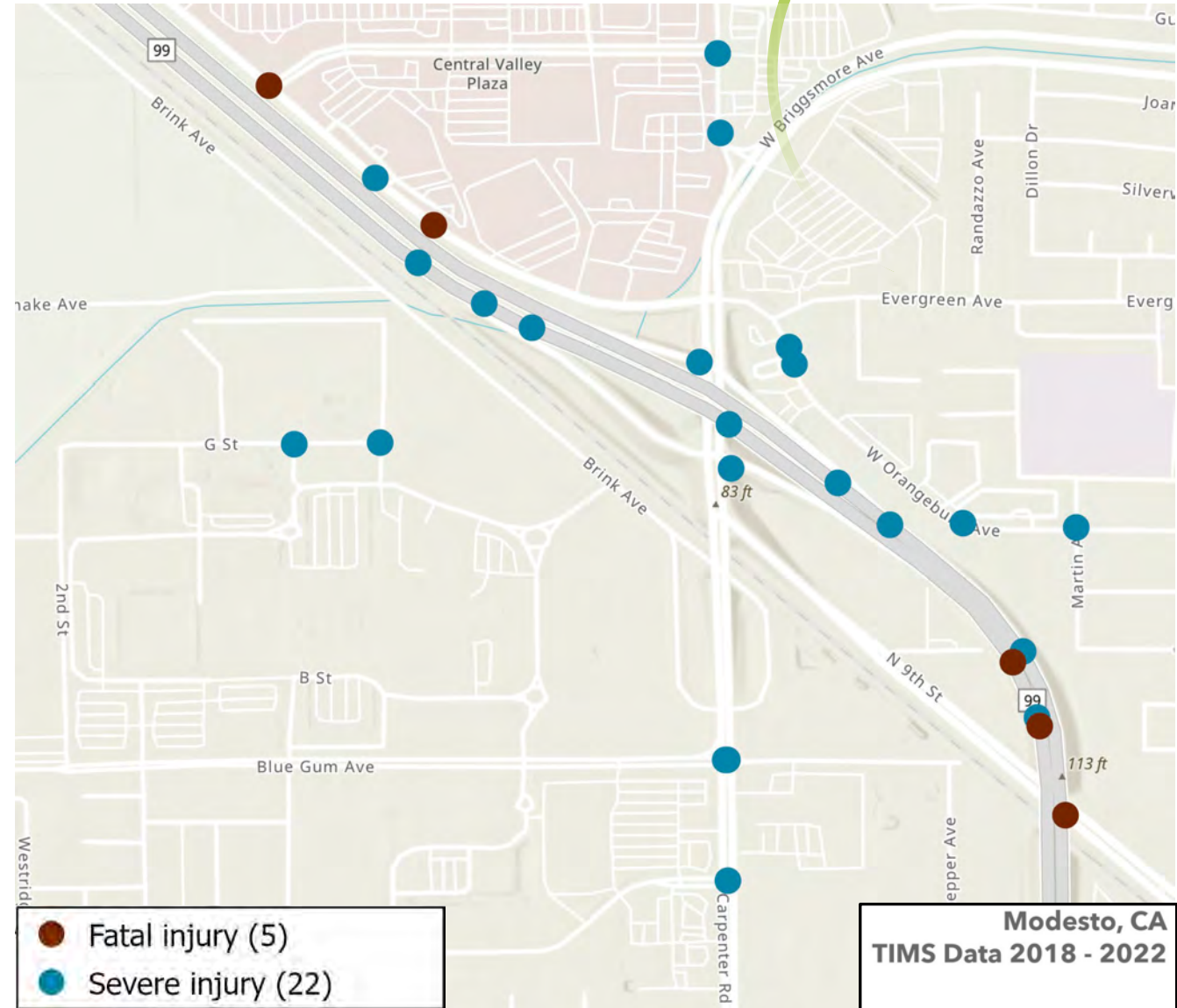
Corridor Constraints – After



Collisions

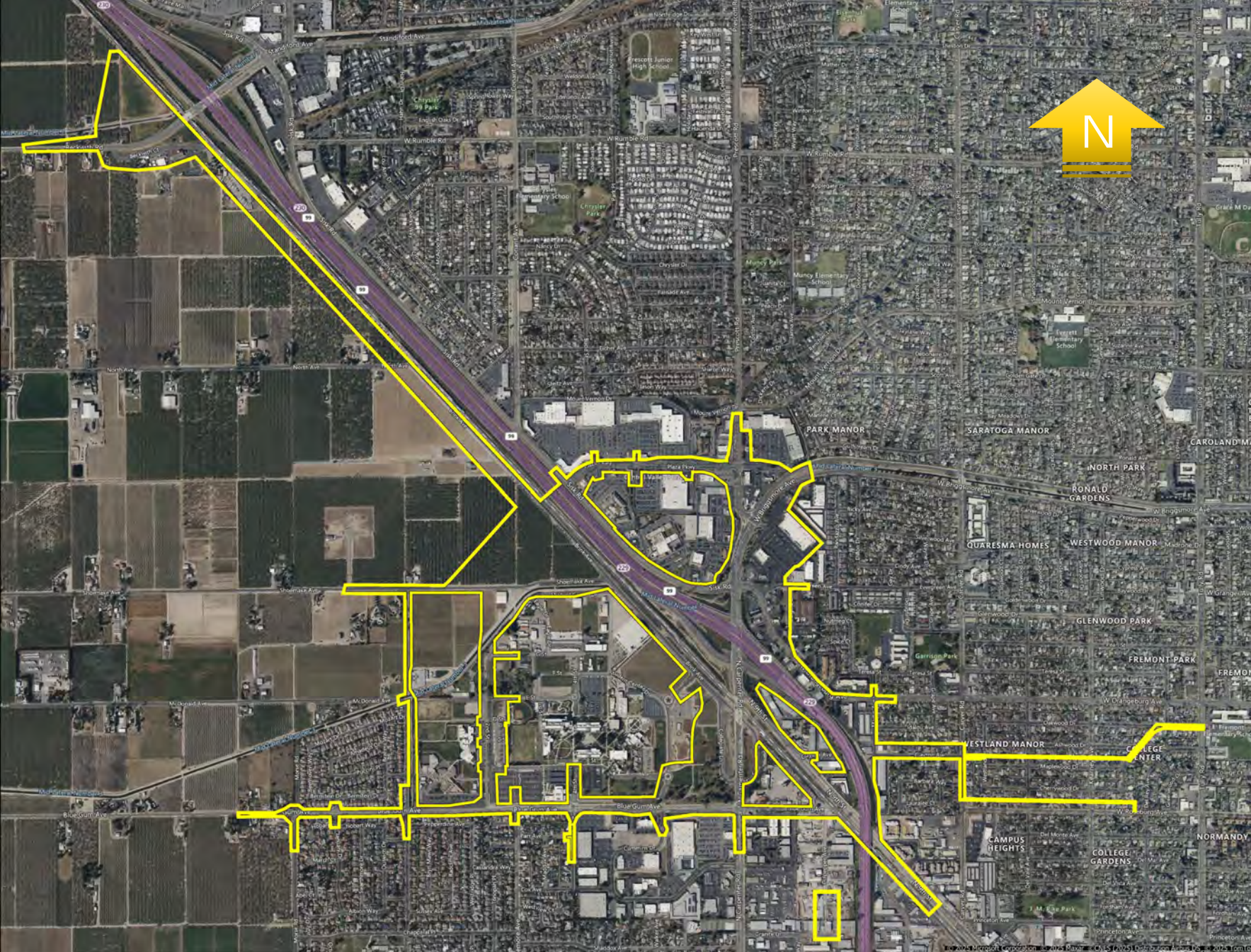
Traffic Collision Severity

- 5 fatal and 22 serious injury
- 4% of citywide fatal and serious injury
- 6 pedestrian & 1 bike
- 9 broadside
- 3 hit object



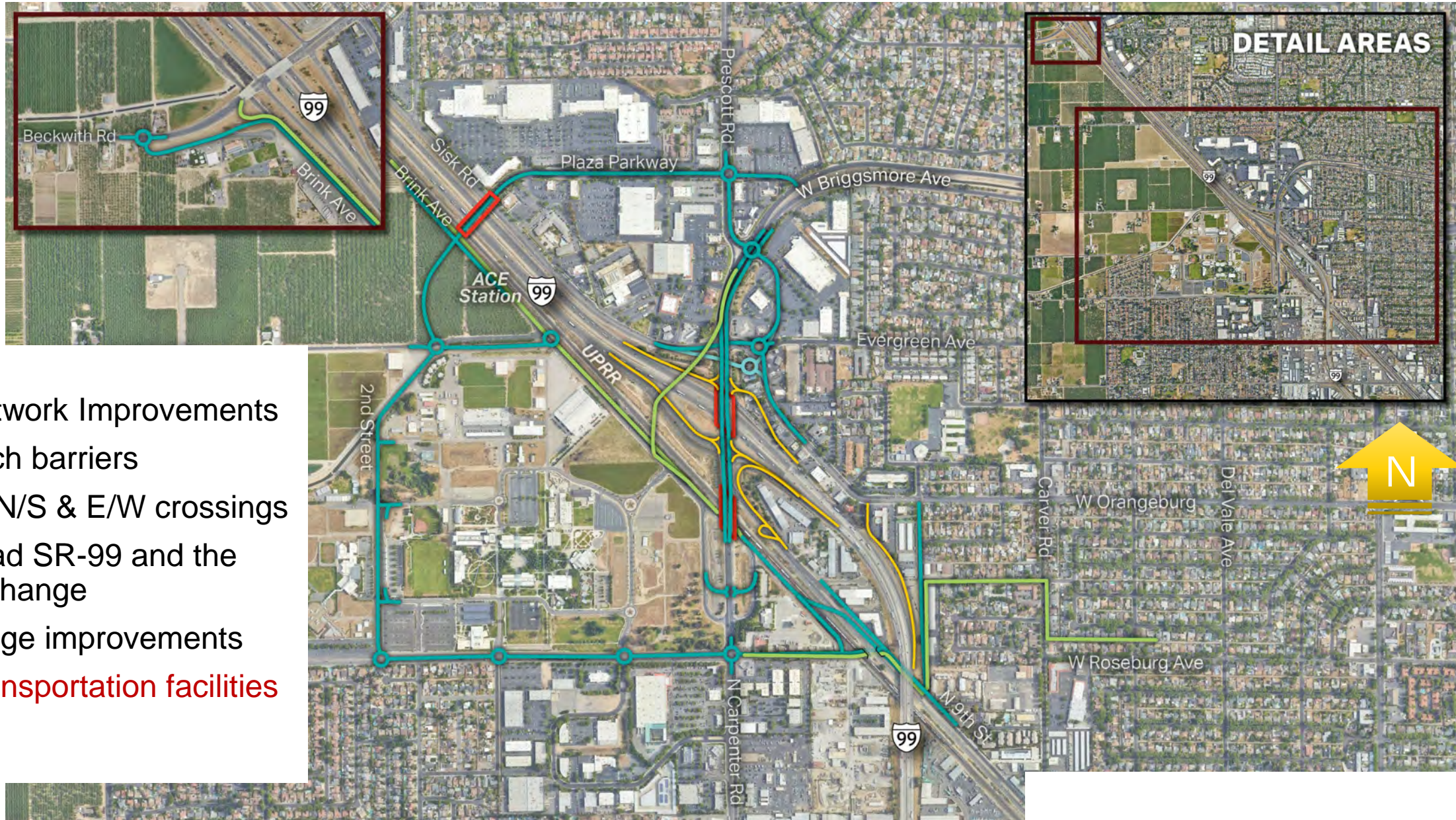
Interchange and Network Planning

- Interchange Alternatives
- Local Roads Alternatives



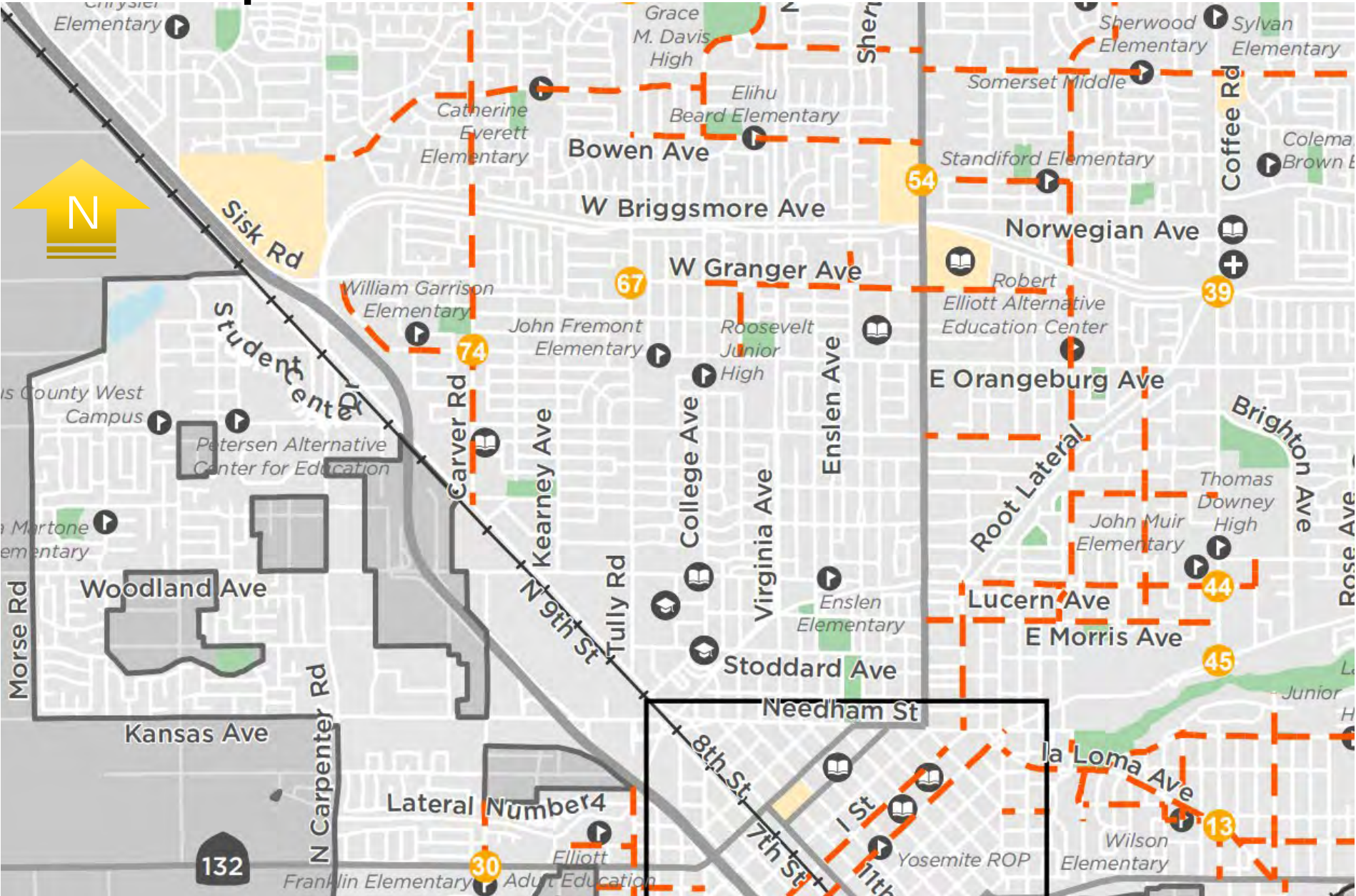
This is a
community
improving project!

More than an Interchange Project!



- Local Network Improvements
 - Breach barriers
 - New N/S & E/W crossings
 - Offload SR-99 and the interchange
- Interchange improvements
- Active transportation facilities is key!!

Active Transportation & Transit



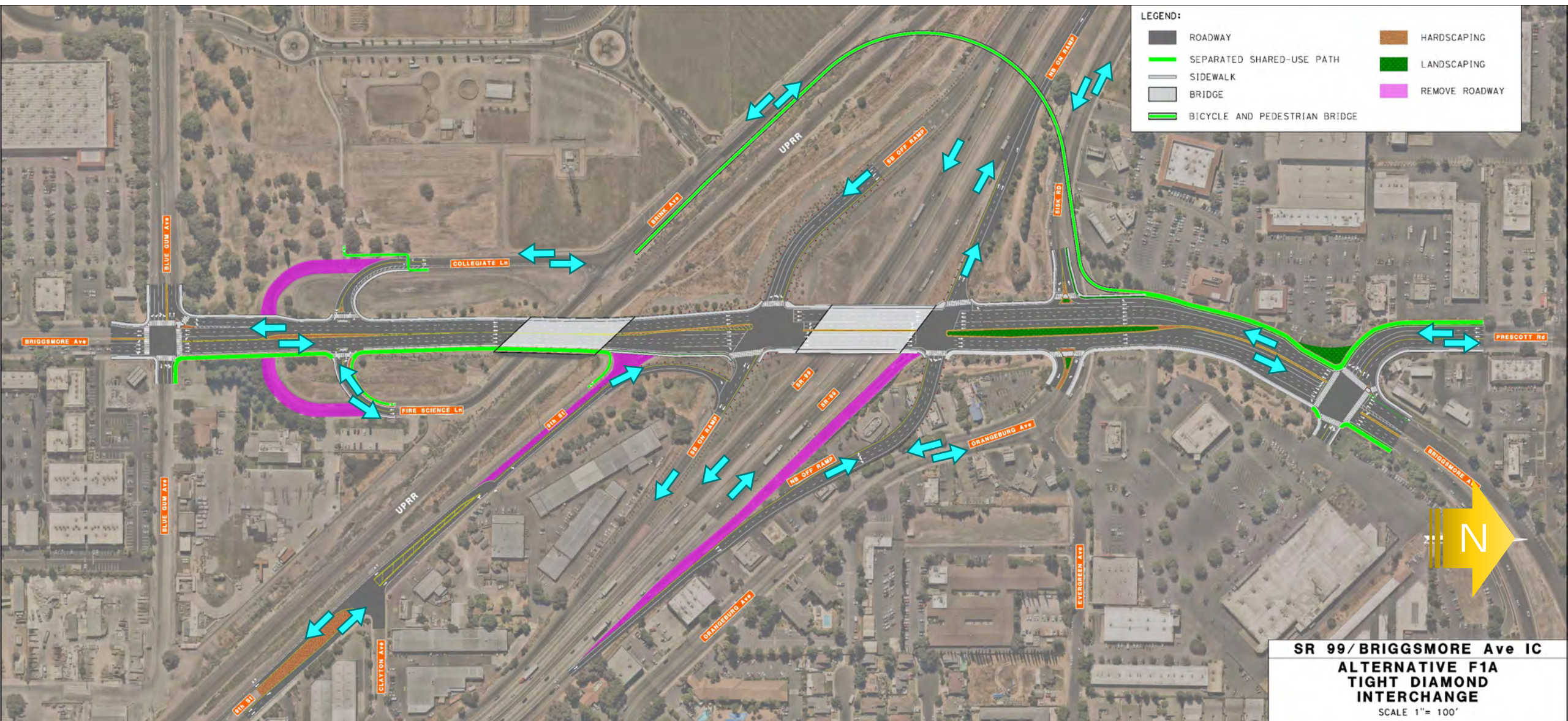
Just as important
as roads!

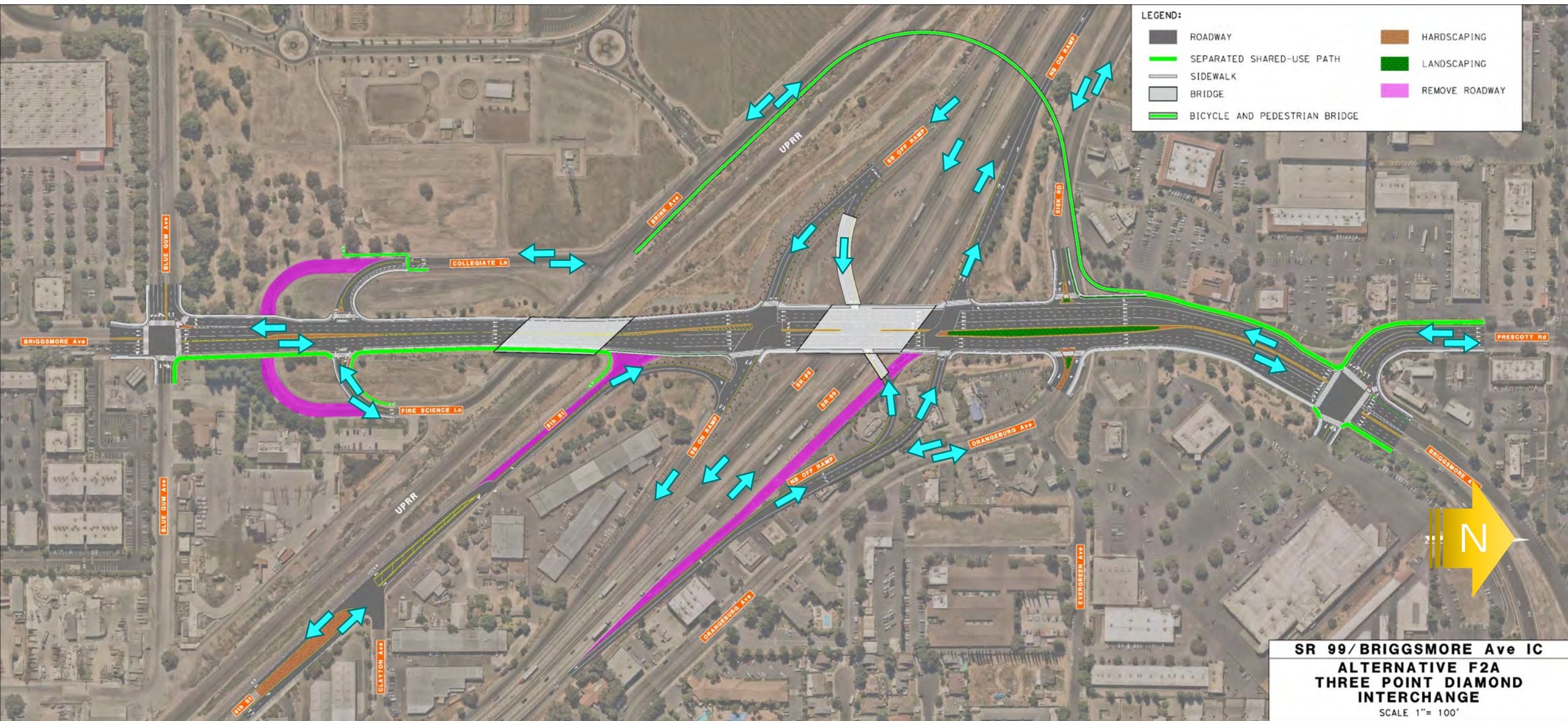


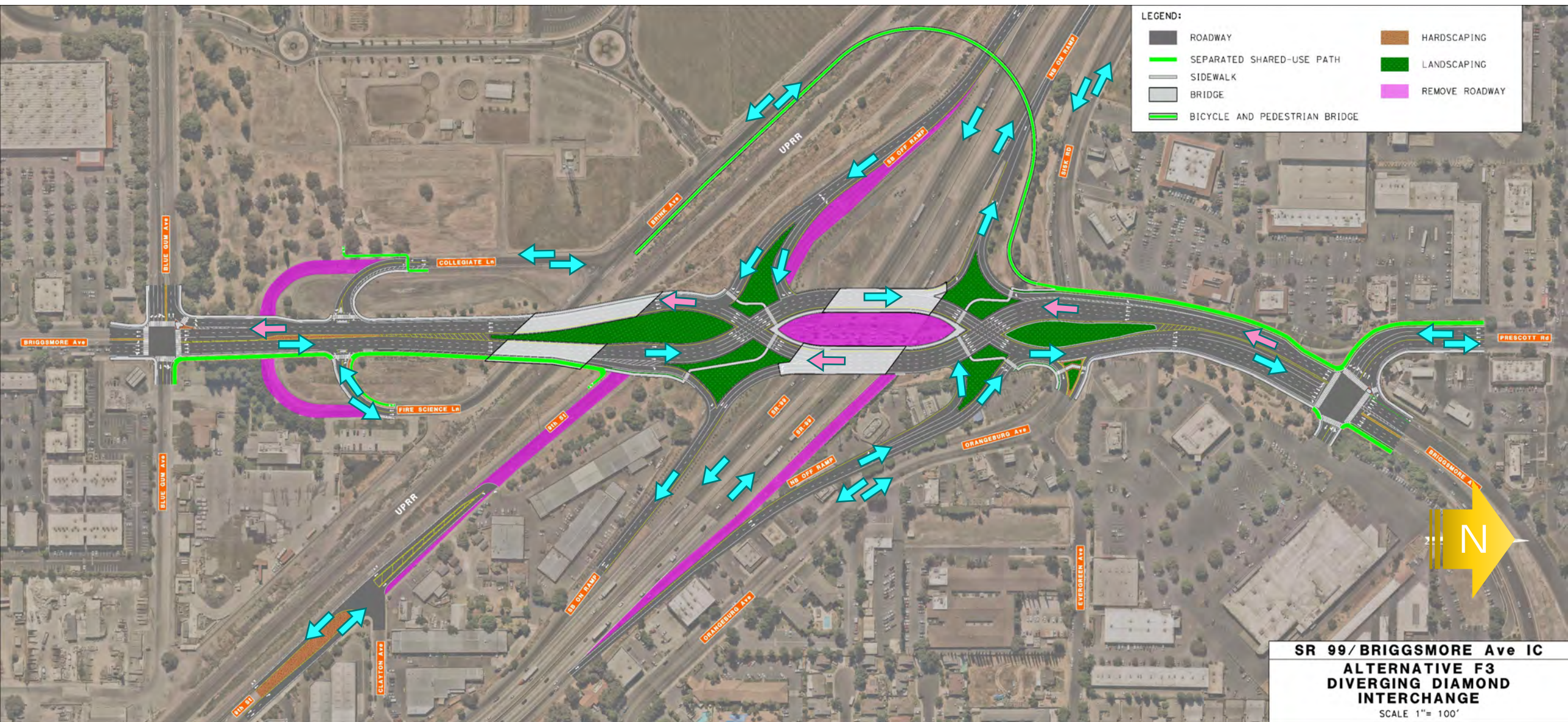
Interchange and Network Planning

- Interchange Alternatives
- Enhance Safety | Increase Accessibility

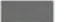














LEGEND:

	ROADWAY		HARDSCAPING
	SEPARATED SHARED-USE PATH		LANDSCAPING
	SIDEWALK		
	BRIDGE		
	BICYCLE AND PEDESTRIAN BRIDGE		

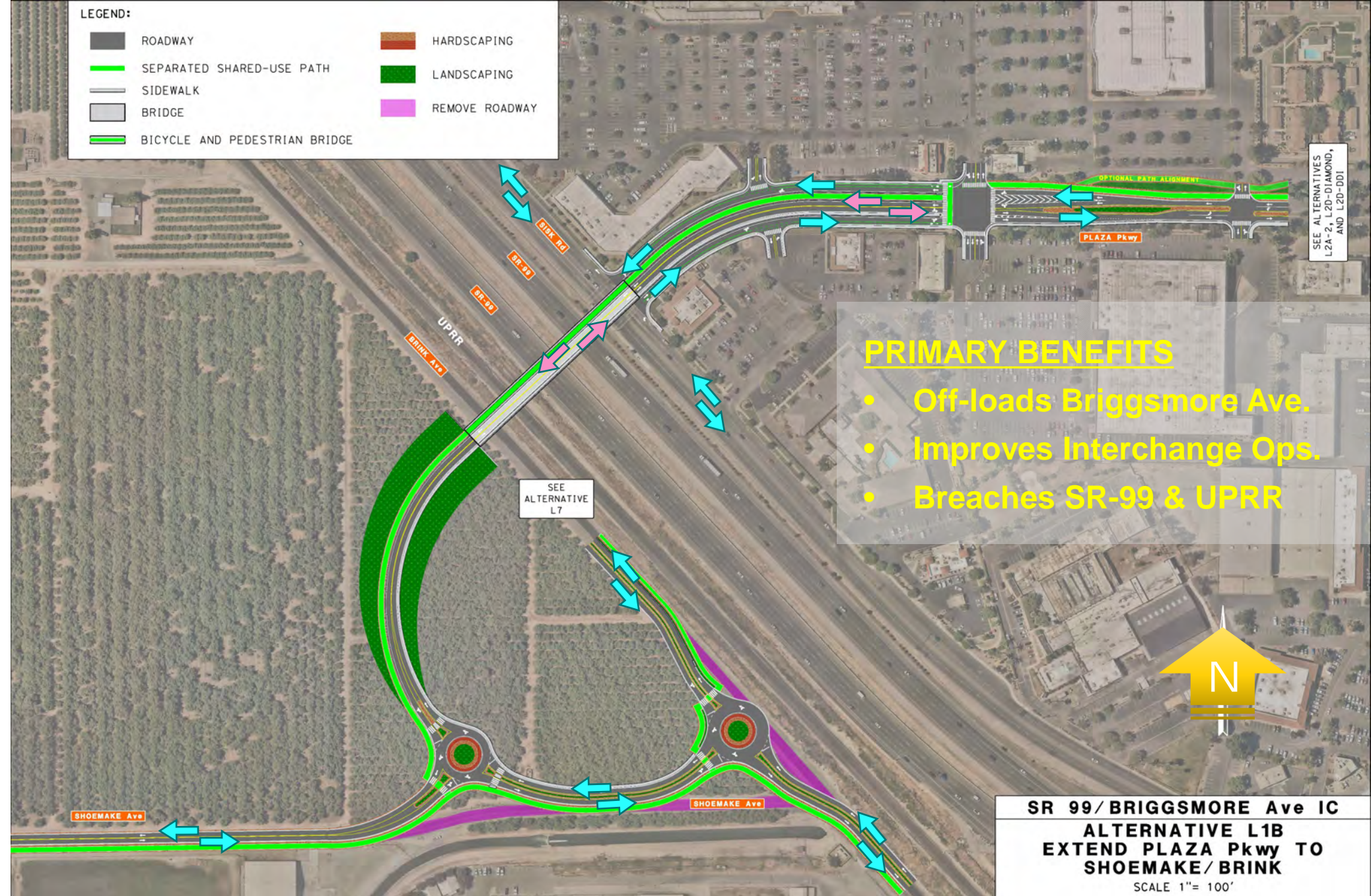
PRIMARY BENEFITS

- Off-loads NB Briggsmore Ave. off-ramp
- Diverts traffic from Kansas Ave.



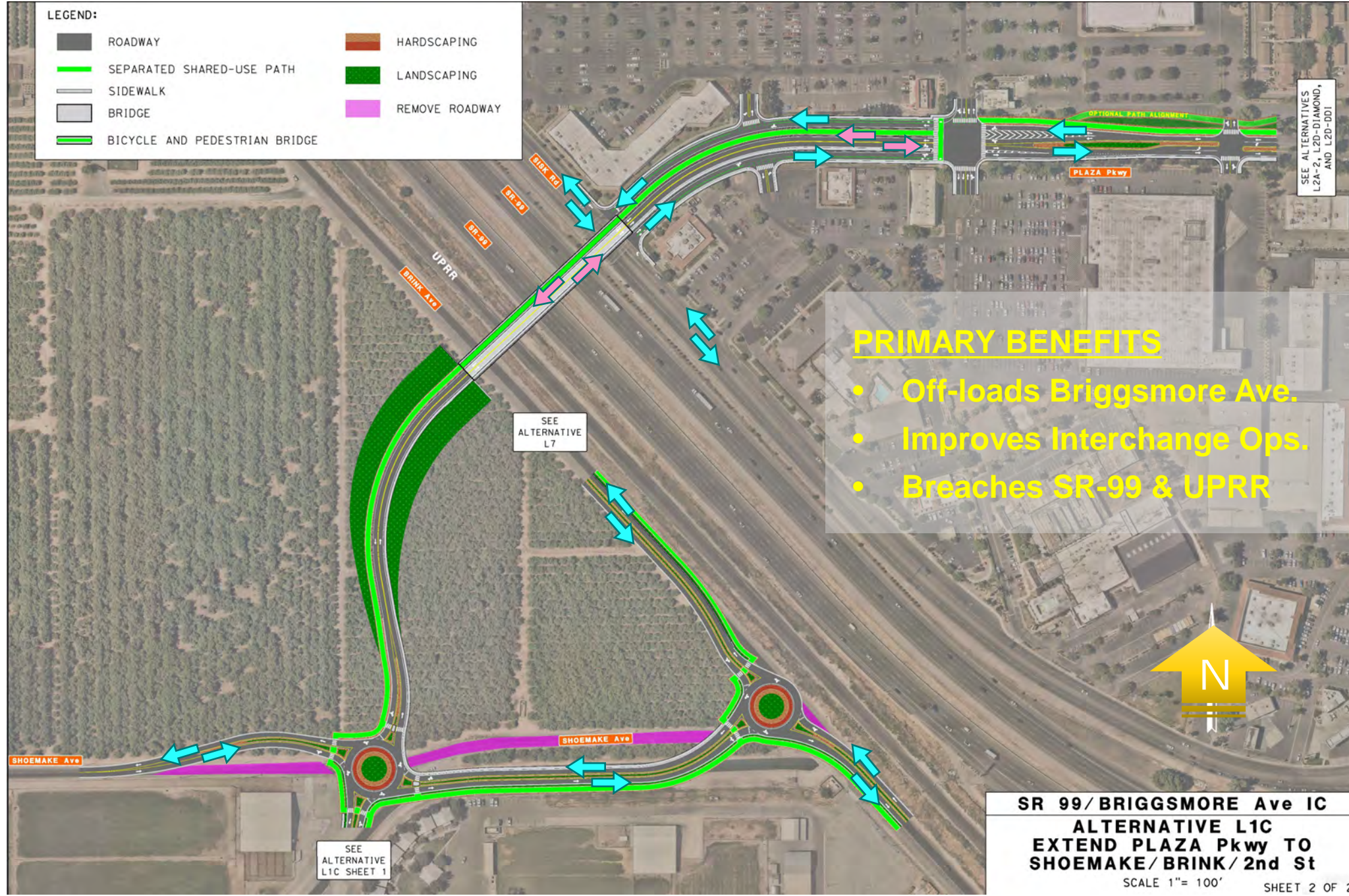
Interchange and Network Planning

- Local Roads Alternatives
 - Plaza Parkway Extension



LEGEND:

	ROADWAY		HARDSCAPING
	SEPARATED SHARED-USE PATH		LANDSCAPING
	SIDEWALK		REMOVE ROADWAY
	BRIDGE		
	BICYCLE AND PEDESTRIAN BRIDGE		



PRIMARY BENEFITS

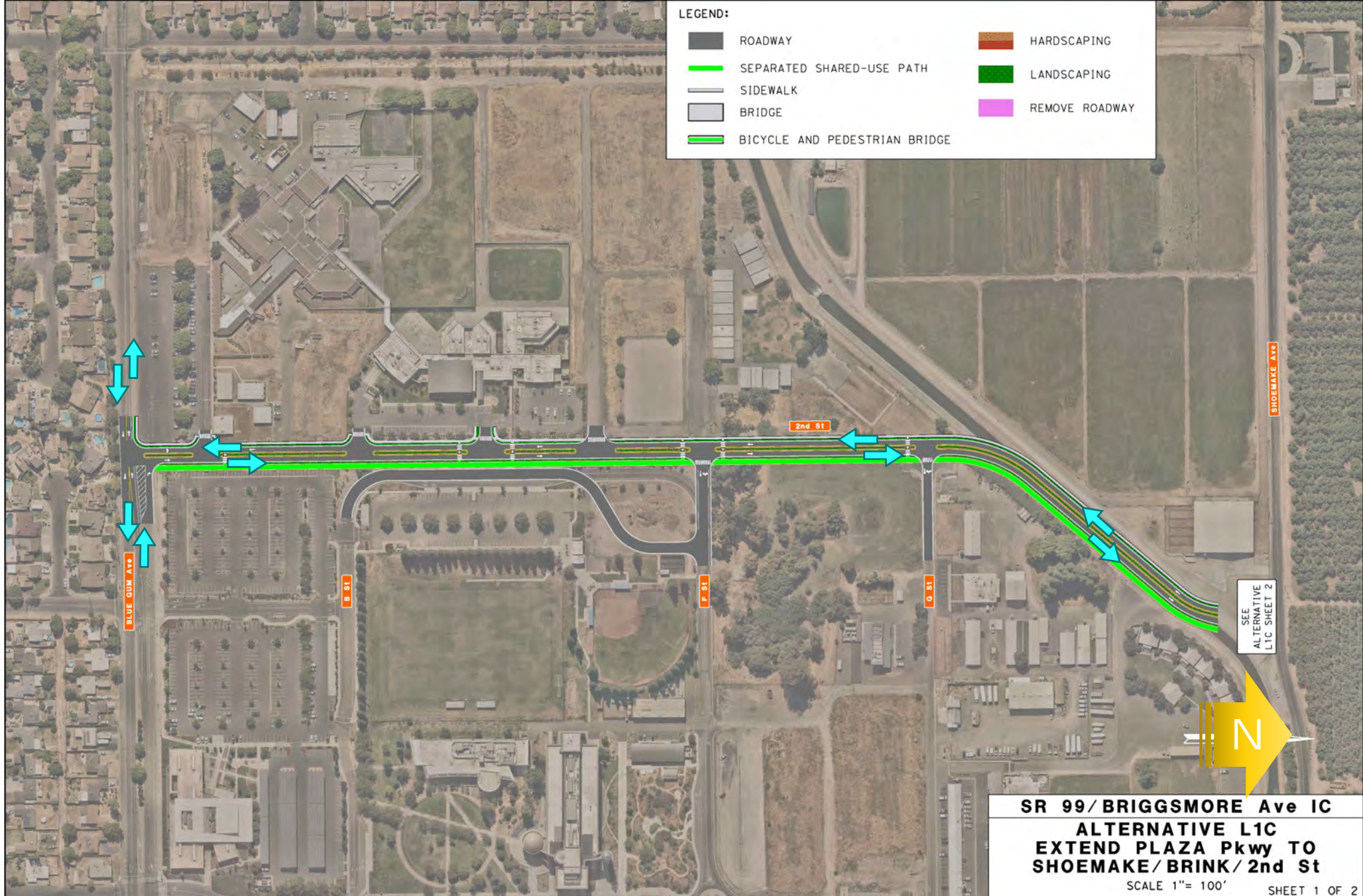
- Off-loads Briggsmore Ave.
- Improves Interchange Ops.
- Breaches SR-99 & UPRR

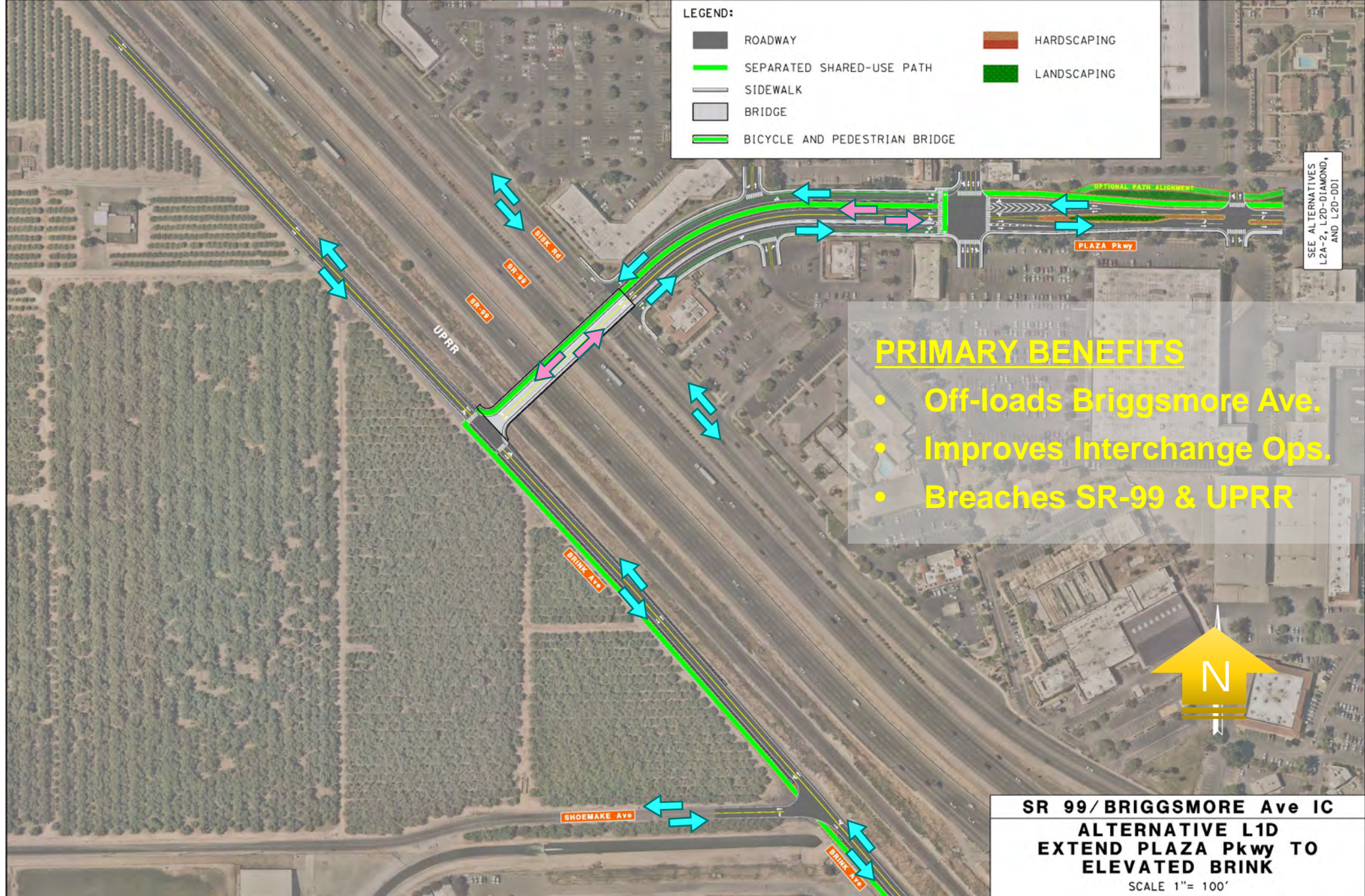


SR 99/BRIGGSMORE Ave IC
ALTERNATIVE L1C
EXTEND PLAZA Pkwy TO
SHOEMAKE/BRINK/2nd St

SCALE 1"= 100'

SHEET 2 OF 2





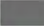



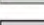



Interchange and Network Planning

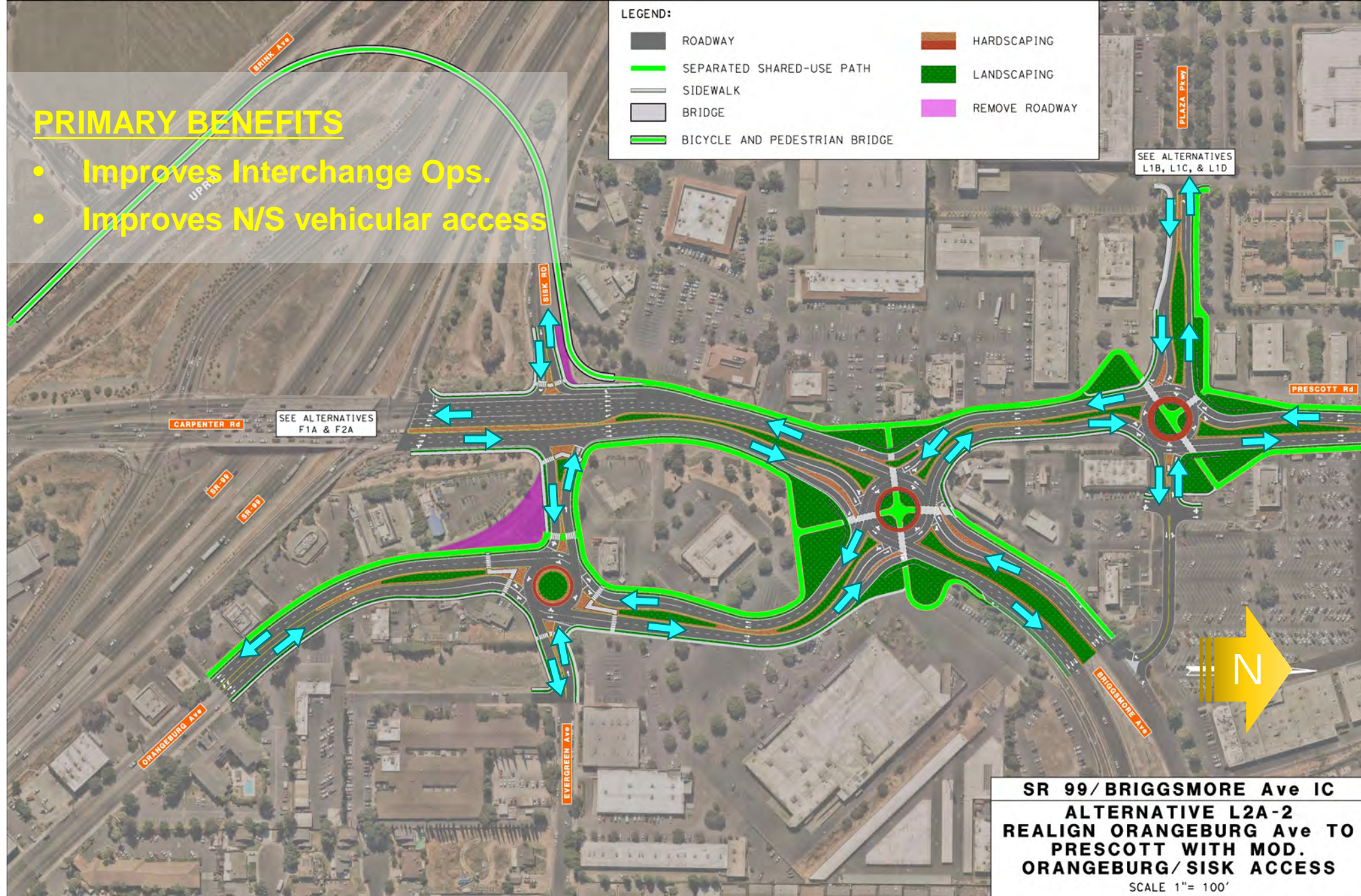
- Local Roads Alternatives
 - Orangeburg Realignment

PRIMARY BENEFITS

- Improves Interchange Ops.
- Improves N/S vehicular access

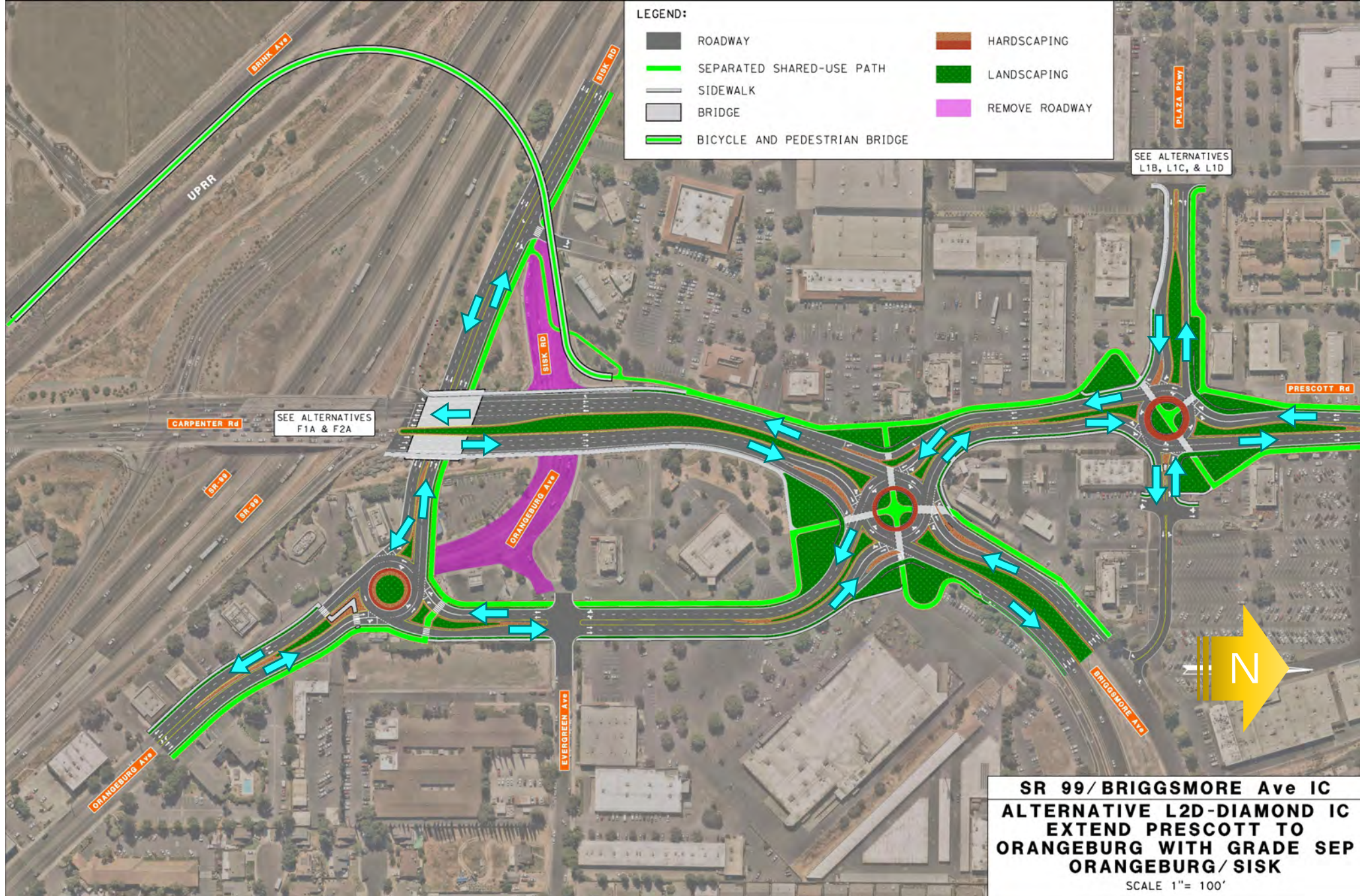
LEGEND:

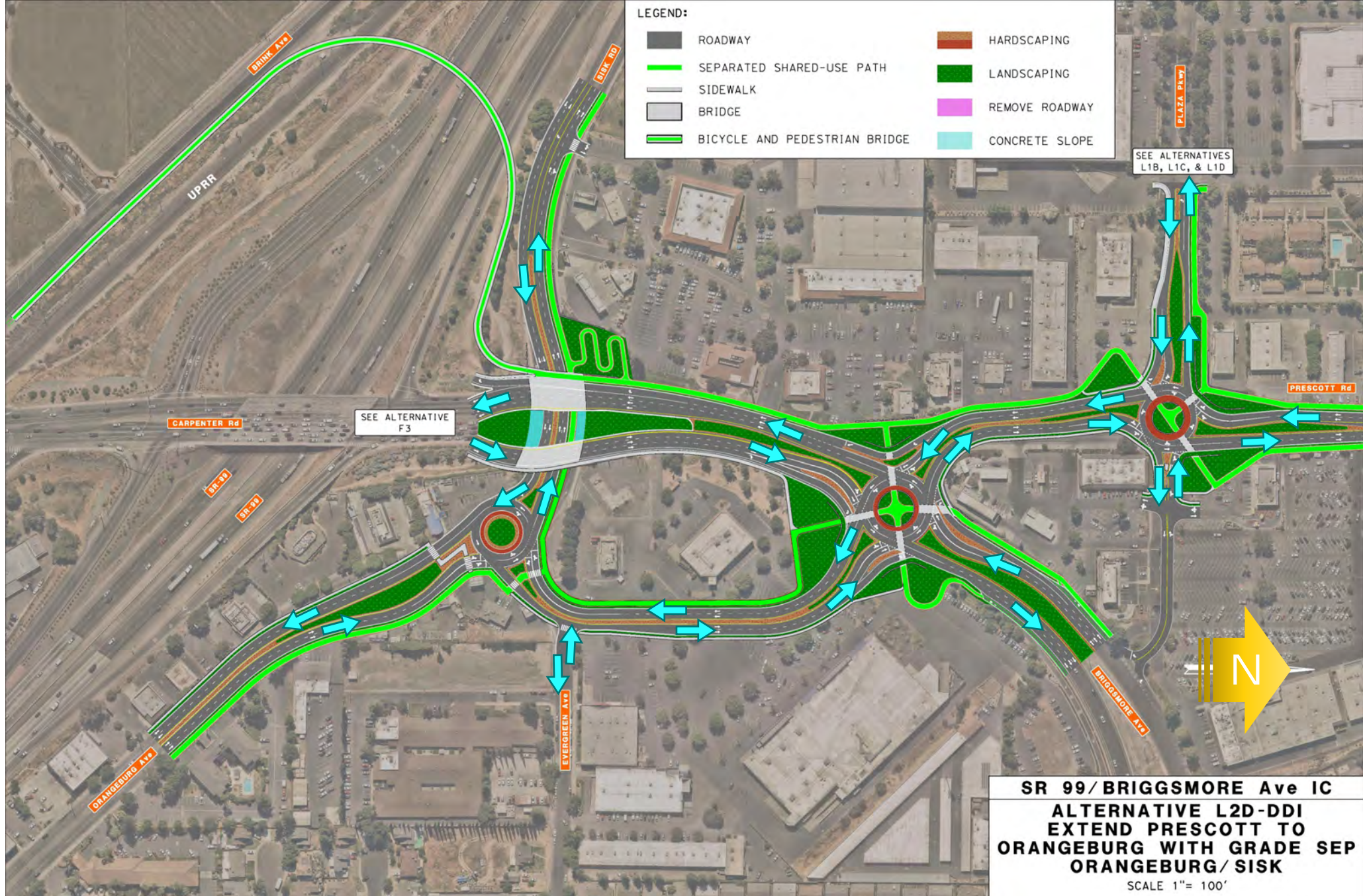
	ROADWAY		HARDSCAPING
	SEPARATED SHARED-USE PATH		LANDSCAPING
	SIDEWALK		REMOVE ROADWAY
	BRIDGE		
	BICYCLE AND PEDESTRIAN BRIDGE		



**SR 99/BRIGGSMORE Ave IC
ALTERNATIVE L2A-2
REALIGN ORANBURG Ave TO
PRESCOTT WITH MOD.
ORANBURG/SISK ACCESS**

SCALE 1"= 100'





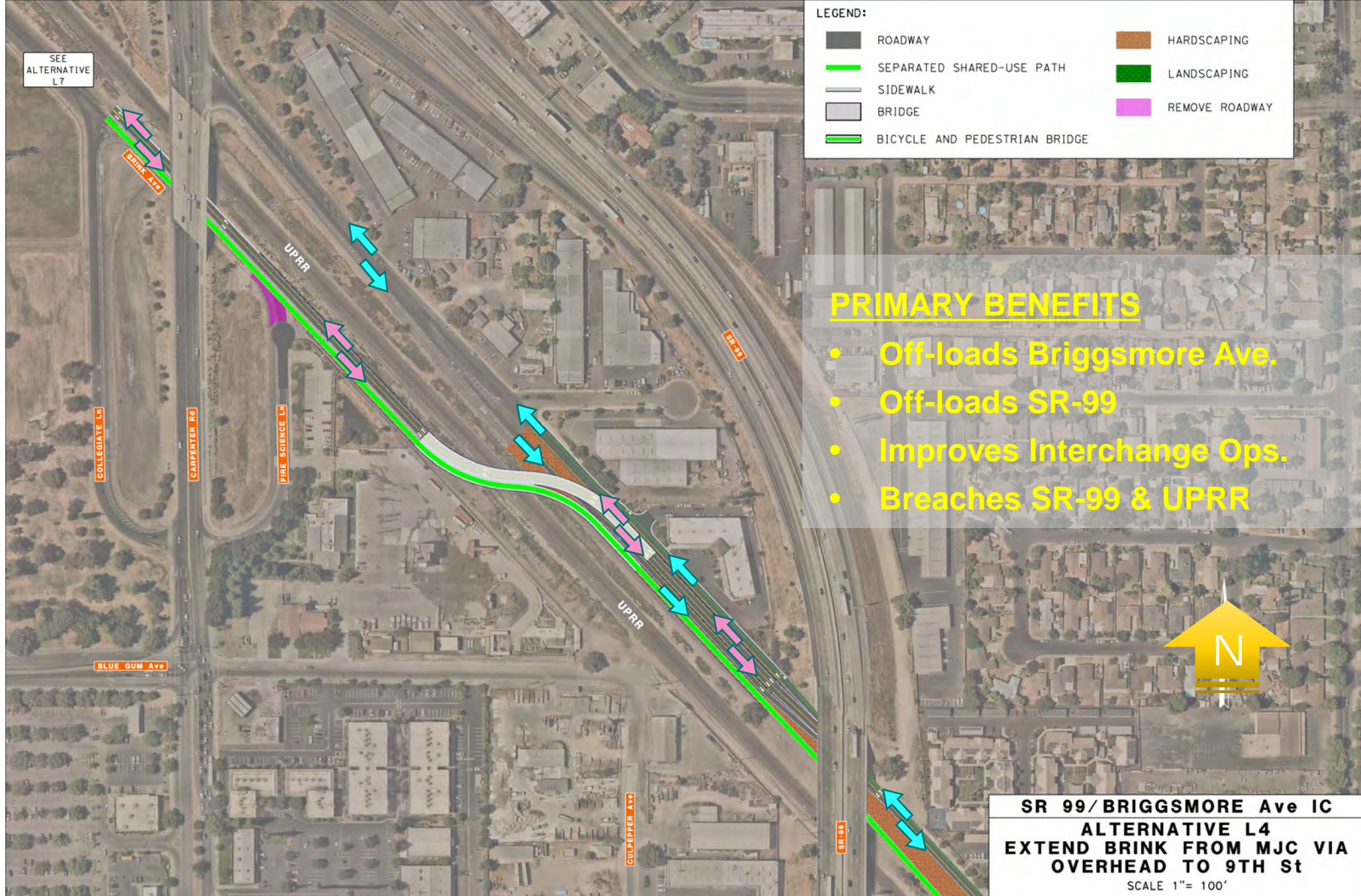


Interchange and Network Planning

- Local Roads Alternatives
 - Blue Gum Extension

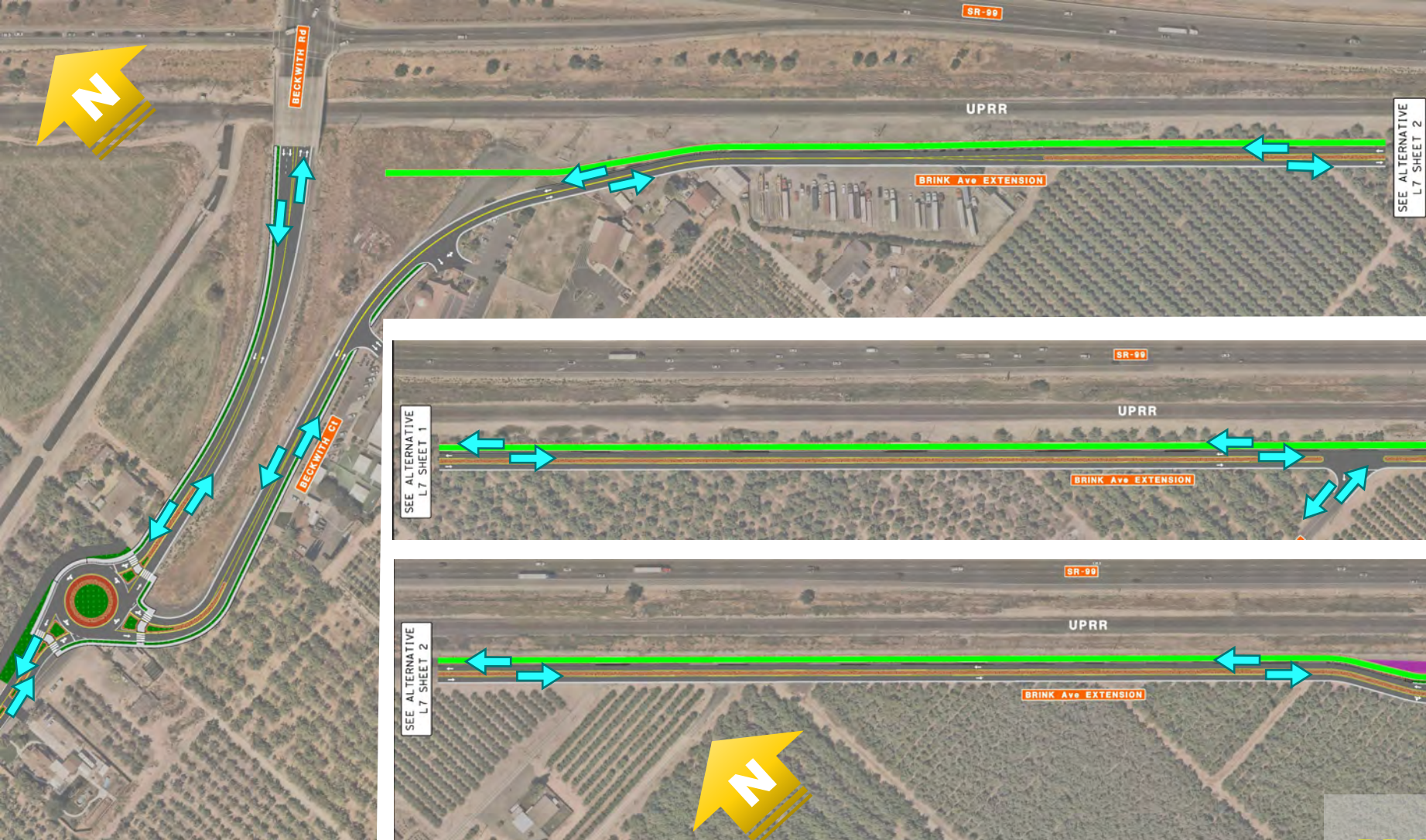
Interchange and Network Planning

- Local Roads Alternatives
 - Brink Avenue Extension (South)



Interchange and Network Planning

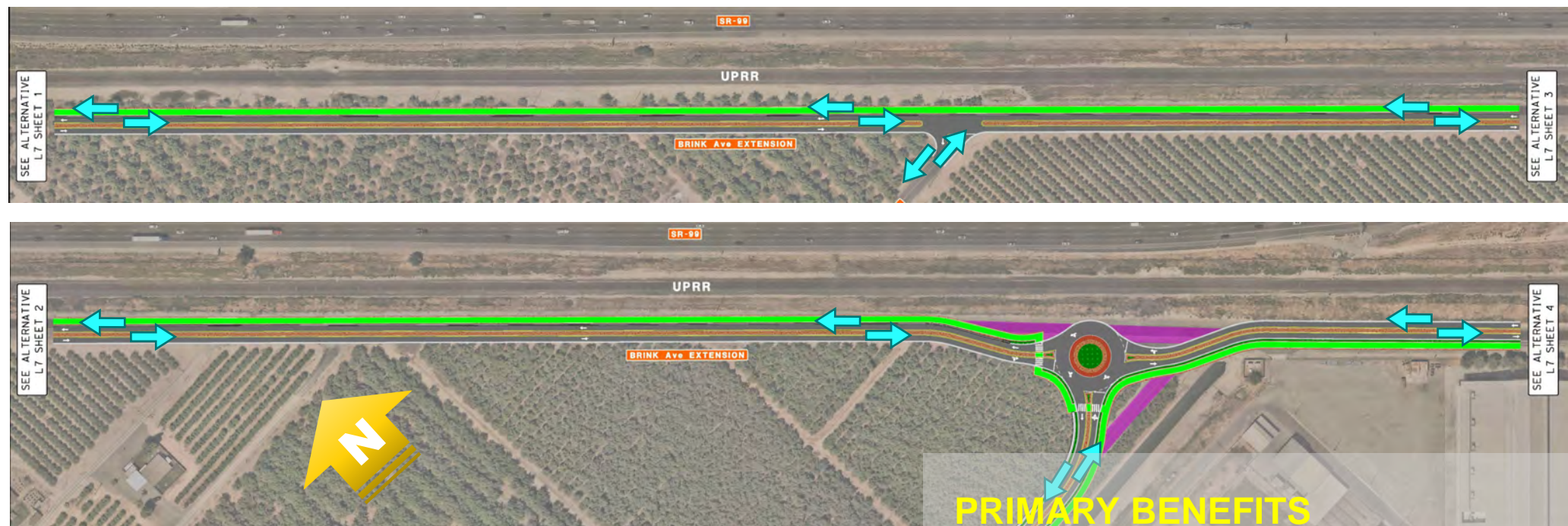
- Local Roads Alternatives
 - Brink Avenue Extension (North)



SR 99/BRIGGSMORE Ave IC

ALTERNATIVE L7

EXTEND BRINK AVENUE FROM MJC TO BECKWITH ROAD



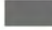



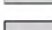

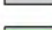


PRIMARY BENEFITS

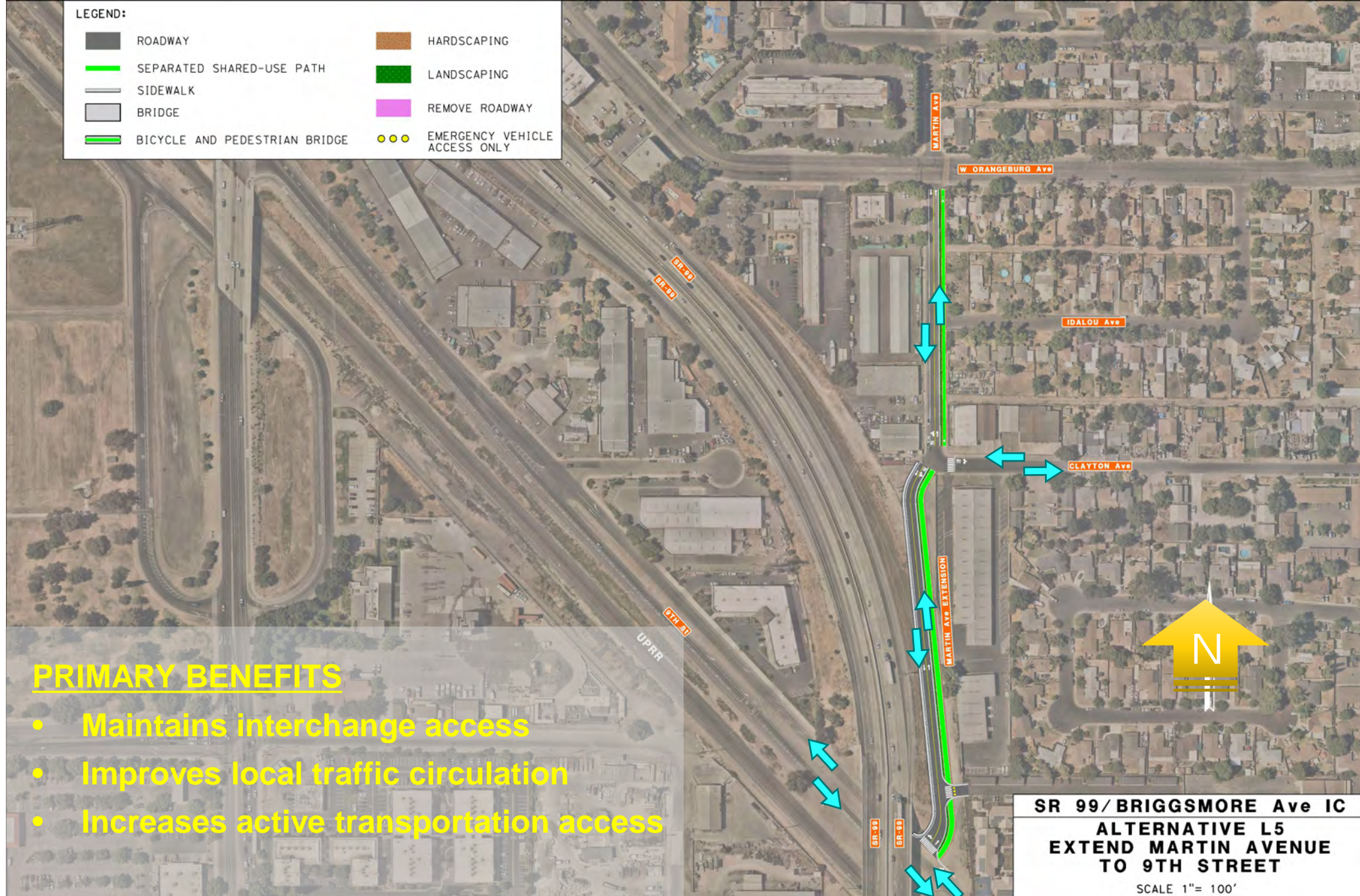
- Off-loads Briggsmore Ave.
- Off-loads SR-99
- Improves Interchange Ops.
- Breaches SR-99 & UPRR



Interchange and Network Planning

- Local Roads Alternatives
 - Martin Avenue Extension

	ROADWAY		HARDSCAPING
	SEPARATED SHARED-USE PATH		LANDSCAPING
	SIDEWALK		REMOVE ROADWAY
	BRIDGE		EMERGENCY VEHICLE ACCESS ONLY
	BICYCLE AND PEDESTRIAN BRIDGE		



PRIMARY BENEFITS

- Maintains interchange access
- Improves local traffic circulation
- Increases active transportation access

We welcome your questions.

Question and Answer Session



Purposeful Access | Climate Action

AECOM Delivering a
better world